

ALORA

RESIDENCES

FREEHOLD

THE FINAL TOWER



Type H Living & Dining | Artist's Impression

Breathe Forest, Live Urban A NEW RISING

In the new heart of Subang Jaya, the final tower of Avenue25's pioneer phase arrives. Organically fusing nature and urban conveniences together in a forest-inspired lifestyle, these new residences are crafted to suit all needs. Choose from two brand new layout options or opt for the dual key unit, ideal for multi-gen families or savvy investors.

At Alora Residences, staying in or heading out is always a pleasure with three levels of facilities and doorstep retail just a swift elevator ride away. Direct access to highway networks and rail links via a 300m-covered walkway to the USJ 21 LRT Station completes this modish abode's appeal.



COVERED WALKWAY TO
USJ 21 LRT STATION



DOORSTEP RETAIL
(GROUND LEVEL)



CLOSE TO PET-
FRIENDLY PARK



EXPRESS RAMP,
QUICK EXITS



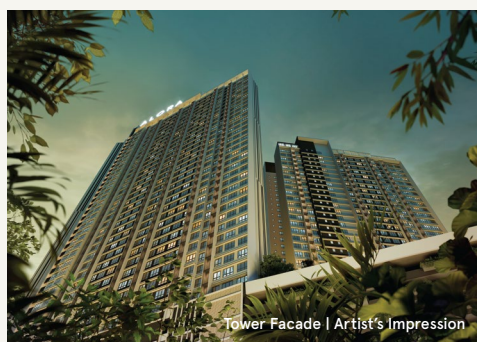
FACILITIES
FOR ALL AGES



PARTIALLY
FURNISHED



Horizon Pool | Artist's Impression



Tower Facade | Artist's Impression



Signature Retail Shops | Artist's Impression

TYPE

F

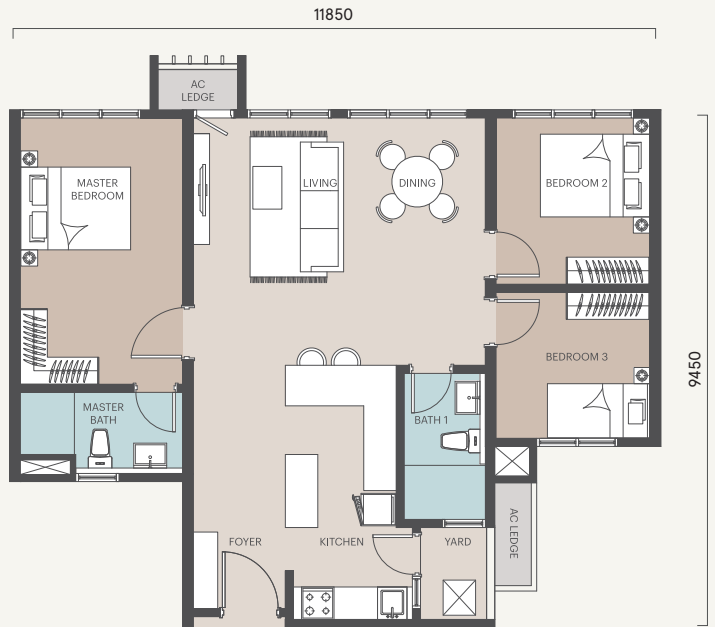
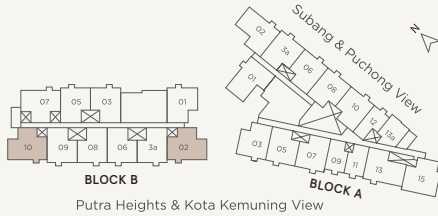
BUILT-UP AREA
1,042 sq.ft.



3 BEDROOMS



2 BATHROOMS



TYPE

F

(a)

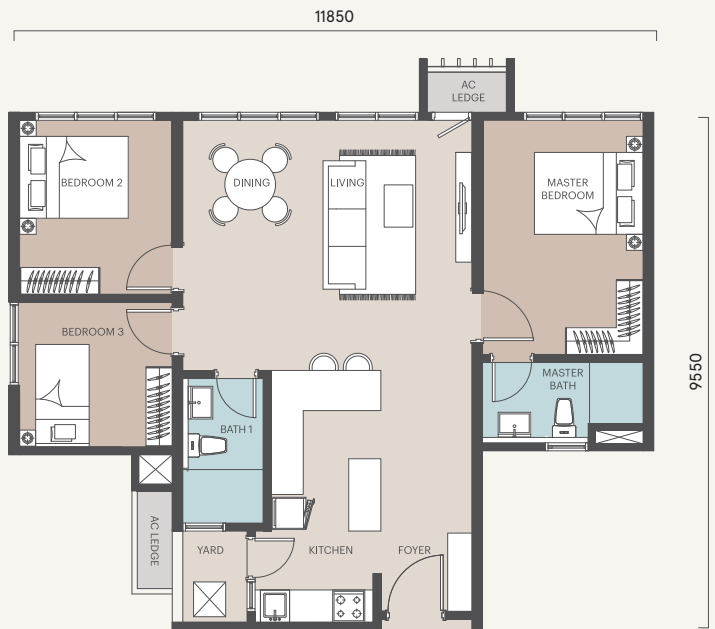
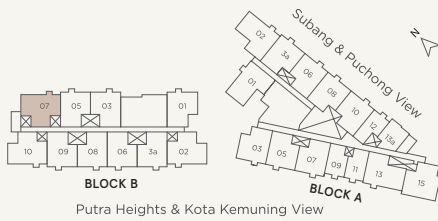
BUILT-UP AREA
1,042 sq.ft.



3 BEDROOMS



2 BATHROOMS



TYPE

H

BUILT-UP AREA
923 sq.ft.

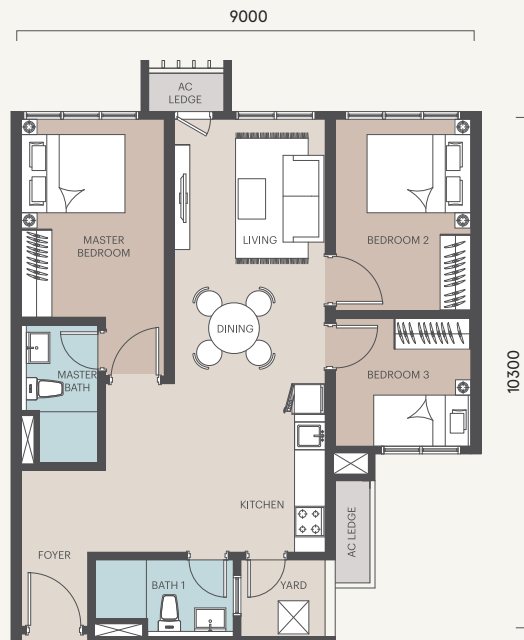
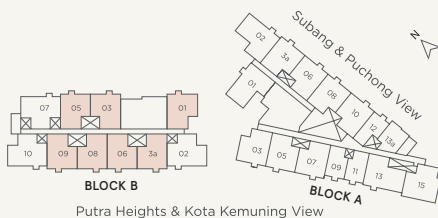


3 BEDROOMS



2 BATHROOMS

Convertible to Dual Key






FACILITIES FOR ALL AGES

Next to a neighbourhood park, Alora Residences has more than 20 multi-generational facilities spread across three levels.



Well-Placed, Easy Access

Alora Residences is directly linked to major cities within Greater Kuala Lumpur via three key highways and the USJ 21 LRT Station (Kelana Jaya Line). Life's essentials and amenities abound within its masterplan, Avenue25 and beyond in the nearby townships of Petaling Jaya and Shah Alam.

|  DISTANCE TO PRIME LOCATIONS | (km) |
|--|------|
| Main Place | 2.0 |
| Taipan | 4.0 |
| Bandar Sunway | 7.3 |
| Bandar Puteri Puchong | 7.5 |
| KL City Centre | 26 |
| Port Klang | 27 |
| KLIA | 38 |

