



DISCOVER THE WONDERS of PARK HOME LIVING FREEHOLD



A WELL-BALANCED
TOWNSHIP



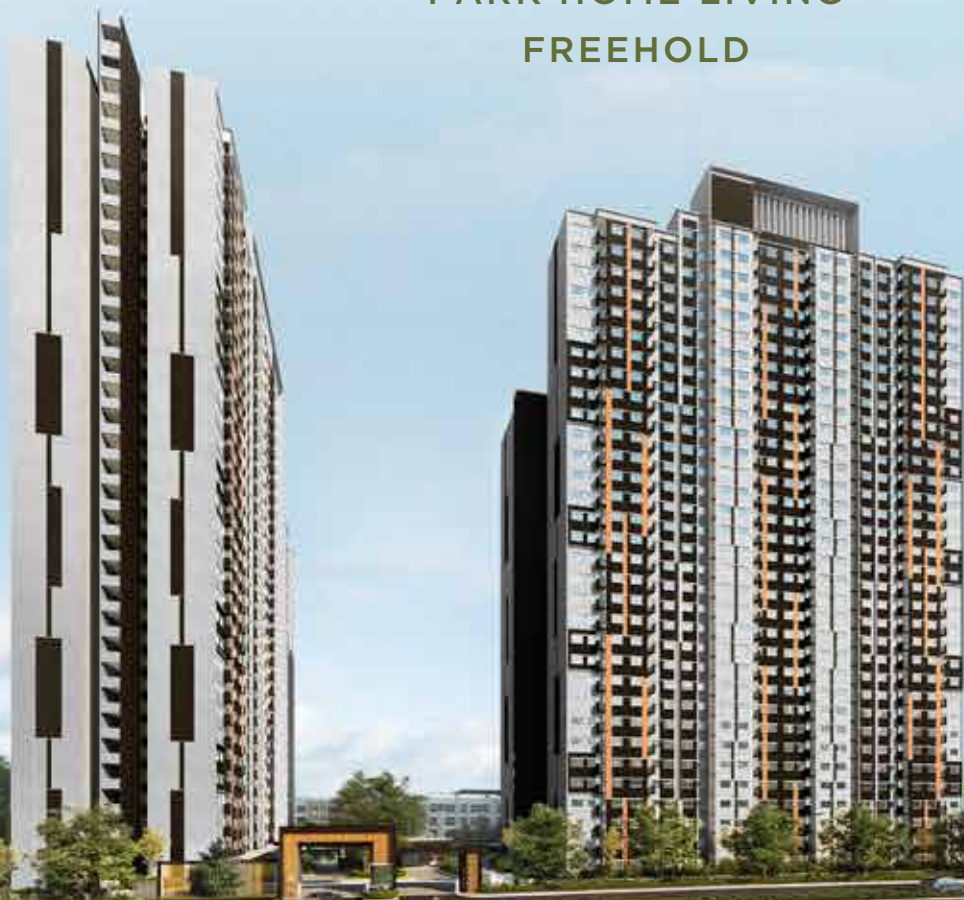
SURROUNDED BY
A COMPLETE
INFRASTRUCTURE



NATURE
AS YOUR
PLAYGROUND

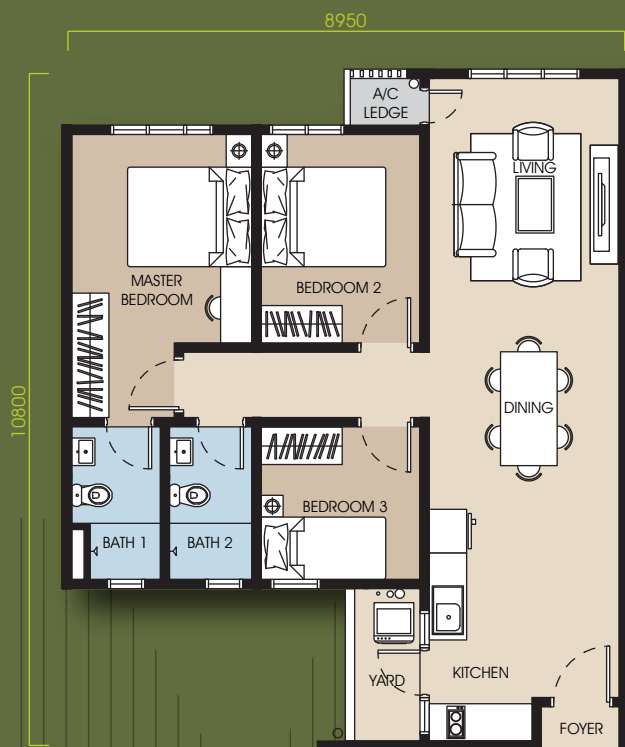


COUNTLESS
LIFESTYLE
AMENITIES



Elevate your lifestyle at M Sinar, where every aspect is thoughtfully crafted for your comfort. Immerse yourself in lush landscapes, bask in natural light, and savor cool breezes that will entice you to linger outside. Discover a haven of relaxation and indulgence through its diverse amenities.

Artist's impression only



Lifestyle image

Indicative Built-up
868 sq.ft.

3
Bedrooms

2
Bathrooms

A HIGHLY DESIRABLE

..... sustainable
DESTINATION

Perfectly positioned to take advantage of a landmark location, Southville City is an exciting destination for all to enjoy.

This 428-acre integrated sustainable township marks its presence with a statement of quality and liveability, complemented by thriving commercial centres, recreational facilities and a retail hub with over 100 popular brands to serve the community and visitors from afar.



LEISURE

- Bukit Unggul Country Club
- Danau Golf Club
- Bangi Golf Resort
- Palm Garden Golf Club
- Taman Botani Putrajaya
- UniPutra Golf Club
- Nilai Springs Golf & Country Club



EDUCATION

- Greenview Islamic International School (GVIIS)
- SK Bangi
- UniKL Malaysia France Institute (UniKL MFI)
- Universiti Kebangsaan Malaysia (UKM)
- SMK Bandar Baru Bangi
- Nexus International School
- Universiti Putra Malaysia (UPM)
- Universiti Tenaga Nasional (UNITEN)
- German-Malaysia Institute (GMI)
- Islamic University Selangor (UIS)



SHOPPING

- KIPMall Bangi
- Lotus's Bangi
- Bangi Sentral
- EVO Mall Bangi
- De Centrum Mall
- IOI City Mall
- Lotus's Nilai
- AEON Mall Nilai
- Giant Nilai



HEALTHCARE

- An-Nur Specialist Hospital
- Hospital Islam Az-Zahrah
- Serdang Hospital
- KPJ Specialist Hospital
- Kajang Hospital
- Putrajaya Hospital

MahSing



Southville City Sales Gallery
E-G-01, Savanna Boulevard Retail,
Jalan Southville 2, Southville City,
43800, Dengkil, Selangor.
Opens Daily: 10AM - 8PM

Reinvent Spaces. Enhance Life.

03 9212 0199
southville-city.com/m-sinar