



BANDAR UTAMA

ENE  
OS

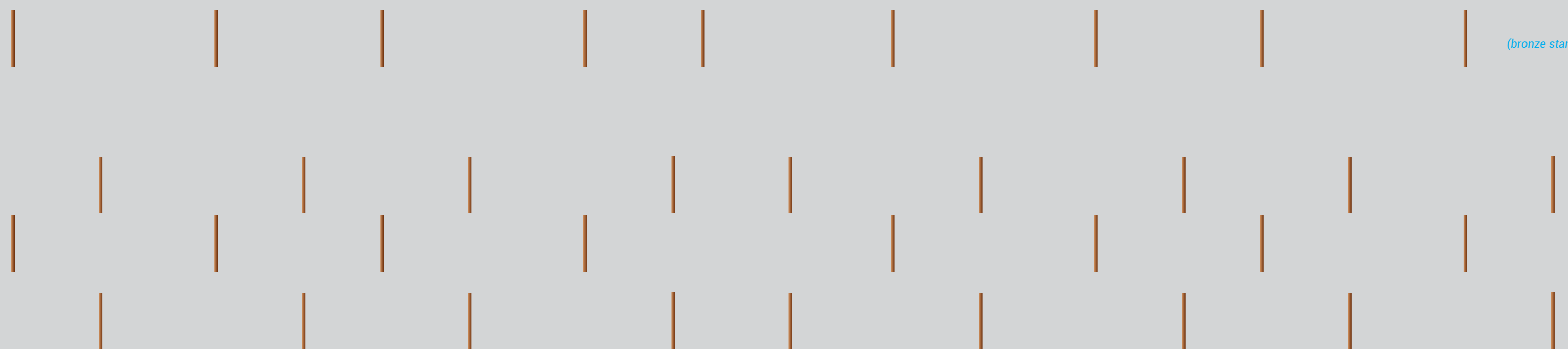
BANDAR UTAMA

Located in Petaling Jaya thriving Bandar Utama area, Enso is a low-density, gated and guarded development and it presents an unmatched opportunity to become part of a matured community.

Slender and striking, the 20 exclusive, four and a half storey villas are richly layered in architectural design.

A truly arresting visage that shines from inside out, illuminating every life within.

(bronze stamping)





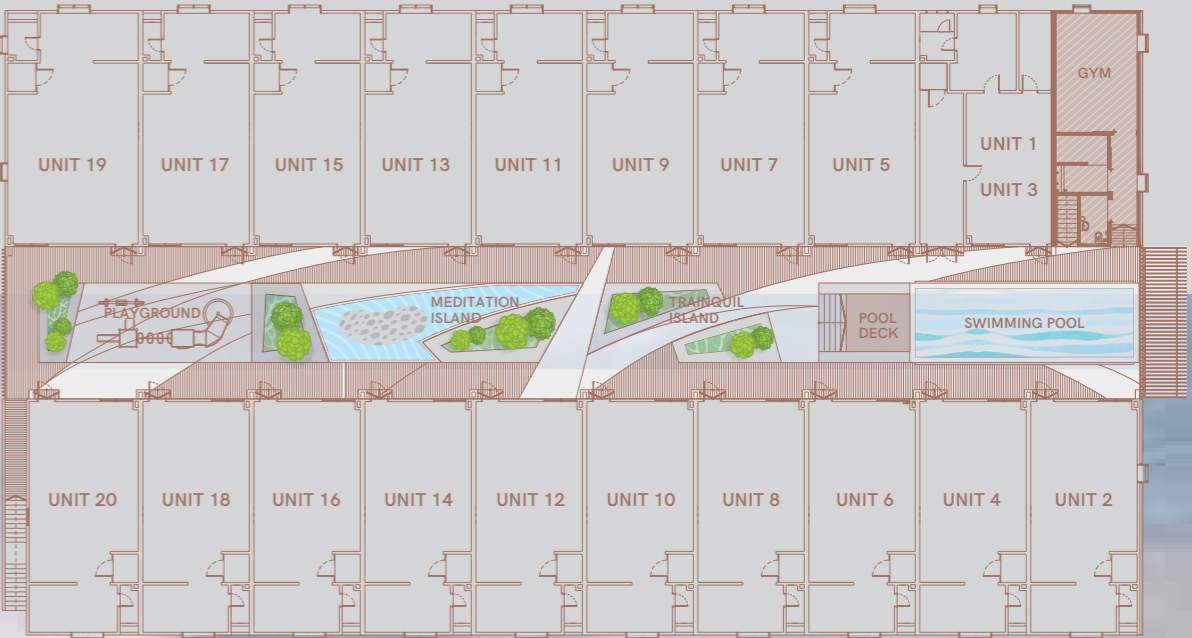
Rectilinear louvres at the facade creates a geometry that celebrates a visual connection between the interior and its surrounding area.

Artist's impression only.

welcome home.

# the pool, gym & kids play area.

A creation of facilities and amenities detailed to its finest.



Artist's impression only.

PLAYGROUND

MEDITATION ISLAND

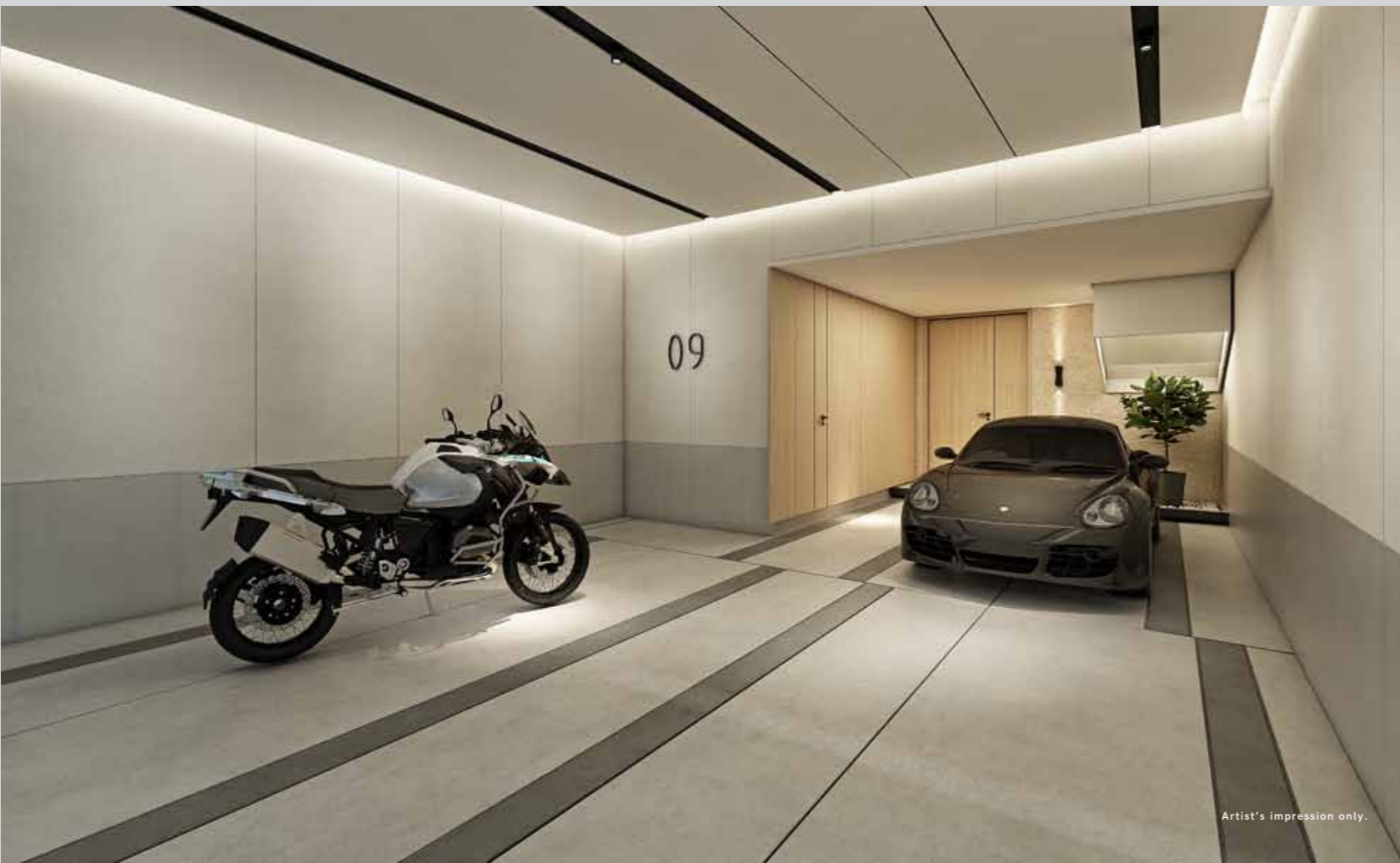
TRANQUIL GARDEN

POOL

GYM



Artist's impression only.



Artist's impression only.

DESIGNED TO SUIT YOUR LIFESTYLE

(bronze stamping)

Enso are imbued with  
thoughtfulness in design that  
goes beyond dimensions.

Through a gate-less concept,  
a convenient drive would  
leave you to your own private  
secured garage and right to  
your front door.

# Type

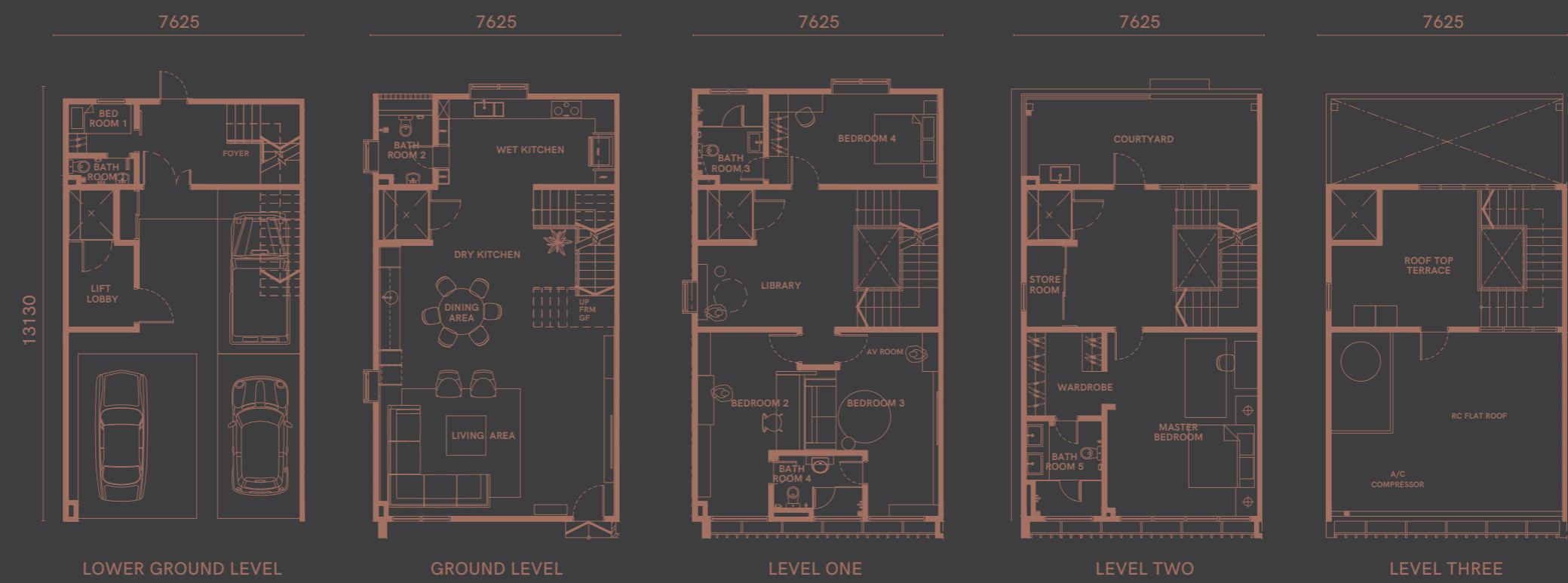
A  
| C |  
B | E  
D  
(pantone 876)



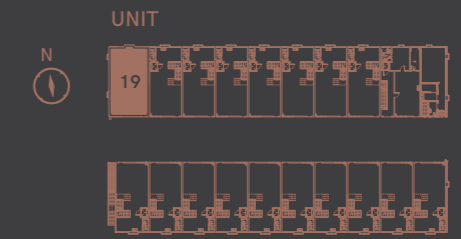
- 5 bedrooms
- 5 toilets
- 1 private lift
- 3 carparks



A



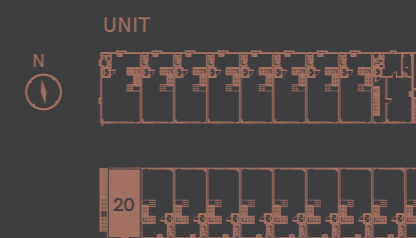
- 5 bedrooms
- 5 toilets
- 1 private lift
- 3 carparks



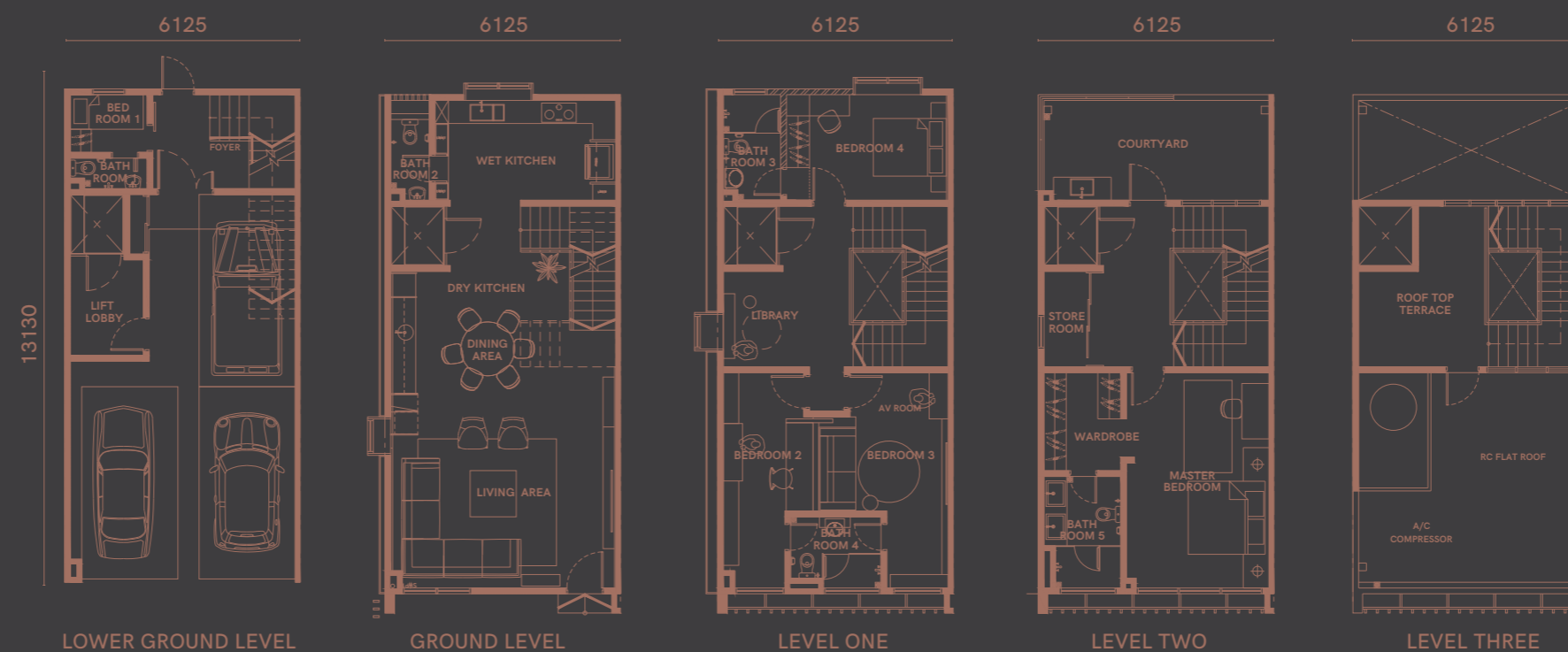
B



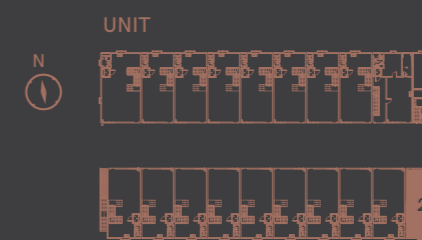
- 5 bedrooms
- 5 toilets
- 1 private lift
- 3 carparks



C

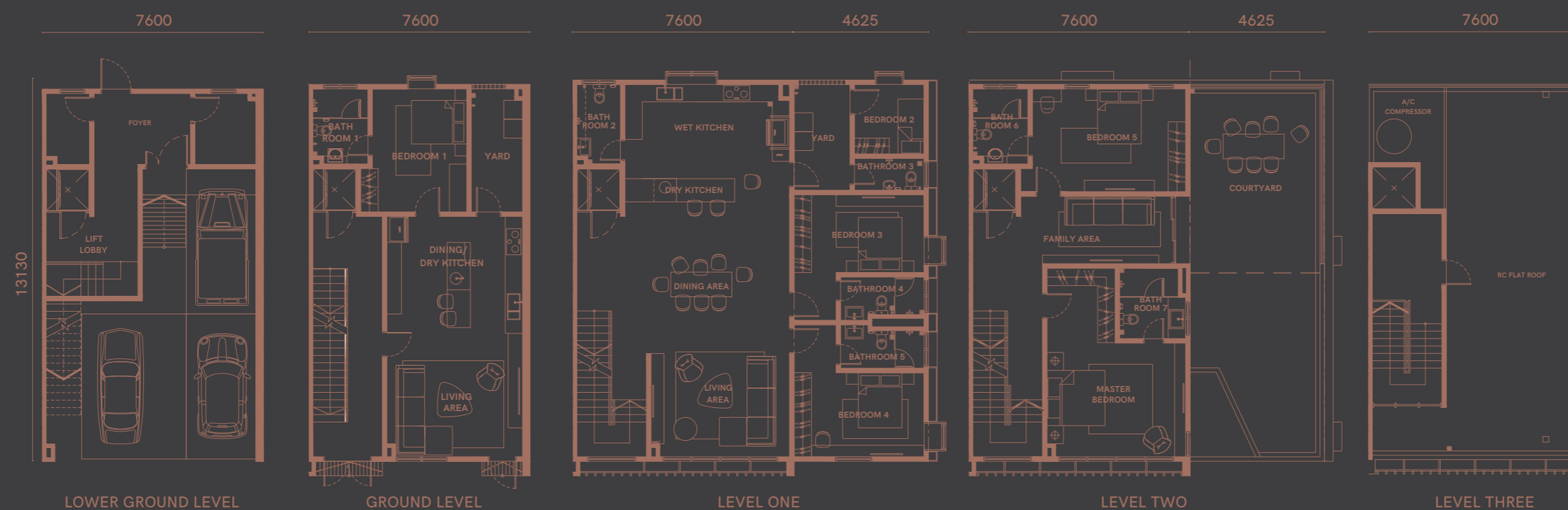


- 5 bedrooms
- 5 toilets
- 1 private lift
- 3 carparks

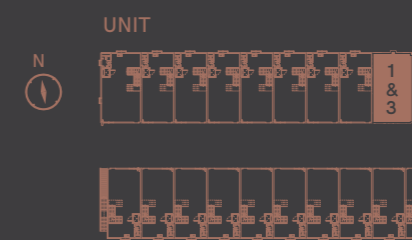


OWN TWO HOMES AT ONCE.

floor plans



- 6 bedrooms
- 7 toilets
- 1 private lift
- 3 carparks



A  
| C |  
B | E  
D

CONCEPT

*(bronze stamping)*

Each living space are perfectly angled to catch the right amount of light.

Facade screens are designed to provide intimate and restful spaces for you and your family are just a few intricate appeals.

It's truly a home that feels exquisitely shaped for you.



Nature spills inside with architectural details, a seamless link from indoors to out on this living space provides a special place to unwind on our own, or in the company of friends.

With this in mind, we designed the grounds and the interiors to compliment human nature with each finished with engineered timber flooring and plaster ceiling design fitted with architectural lighting.



Artist's impression only.

## the family room.

A thoughtful layout that maximises efficiency of spaces accentuated by ceilings up to 3 metres high.

18

Behind the minimalist sophistication of interiors lie impeccable attention to every detail from quality finishes to home fittings and appliances from hob, hoods to your personal wine chiller.

Each unit showcases form and function with a lift that serves 4 levels of your home.



Artist's impression only.

## the dream kitchen.

Functionality optimised with built-in kitchen and appliances.



19

Artist's impression only.

the master bedroom.



20

Artist's impression only.



21

Artist's impression only.

A luxurious retreat with the master bedroom boasting outstanding details and a fantastic use of space.

a private sanctuary.

Bedrooms are designed with en-suite bathroom equipped with quality sanitary ware and fittings.



22

23

Artist's impression only.



Residences are graced with expansive private roof top terraces where the rising and setting sun can be enjoyed.

perfect for  
outdoor entertaining.



Listen to the pulse  
of the city in  
complete serenity.



Promoting style and comfort as well as convenience and ease, Enso benefits from being minutes drive from the shopping centres, clubs, parks, casual eateries; and is surrounded by some of Malaysia's best schools and universities.



# Where gratification are measured in moments.



The perfectly positioned development provides easy access to major employment nodes, shopping and leisure facilities are all within reach via Jalan Damansara, LDP Express way and NKVE Highway.

## POINTS OF INTEREST



### Education

- 1 SK Damansara Jaya 0.4km
- 2 SMK Damansara Jaya 0.4km
- 3 First City College 1.4km
- 4 The British International School of KL 1.4km
- 5 Beacon House Sri Inai International School 5.8km
- 6 St. Joseph's Institution International School 5.8km



### Healthcare

- 7 KPJ Damansara Specialist Centre 4.0km
- 8 Alpha Specialist Centre 4.6km



### Transportation

- 9 MRT Bandar Utama 1.9km



### Shopping

- 10 Centrepont Bandar Utama 900m
- 11 Atria Shopping Gallery 2.0km
- 12 One Utama 3.8km
- 13 Sunway Giza 4.7km
- 14 The Club 4.8km
- 15 Ikea 5.0km
- 16 The Curve 5.0km
- 17 Central Park Bandar Utama 3.8km
- 18 Tropicana City Mall 5.0km

## GENERAL SPECIFICATIONS

### Structure

Reinforced Concrete

### Wall

Bricks

### Roofing Covering

Metal Roof / Reinforced Concrete Roof

### Roof Framing

Metal Roof Truss / Reinforced Concrete

### Ceiling

Skim Coat / Plaster Ceiling

### Windows

Aluminium Frame Glass Window

### Doors

Main Entrance Fire Rated Door

Bedrooms / Bathrooms Plywood Flush Door

Others Aluminium Frame Glass Door /  
Plywood Flush Door

### Ironmongery

Quality Locksets

### Wall Finishes

Kitchen Selected Tiles Up To Ceiling Height,  
Plaster & Paint

Bathrooms Selected Tiles Up To Ceiling Height,  
Plaster & Paint

Others Plaster & Paint

### Floor Finishes

Selected Tiles, Engineered Timber Flooring, Cement Render

### Sanitary And Plumbing Fittings

Kitchen Sink With Tap

Bathrooms Wash Basin, Water Closet, Hand  
Bidet, Shower

### Electrical Installations

Electrical Points Lighting, fan and power points will  
be provided according to M&E  
specification

Air Conditioning System Split units control AC to all  
bedrooms and living

Hot water system All bathrooms

### Internal Telecommunication

#### Trunking And Cabling

Telephone Point

Data Point

Intercom Point



Artist's impression only.

### Built-in Furniture

Kitchen Equipped kitchen with cabinets as  
per ID specification

Appliances Refrigerator, microwave oven,  
cooker hood, hob, washer & dryer

Master Bedroom,  
Bedrooms Built-in wardrobe as per ID  
specification

Bathrooms  
/powder room Vanity cabinets

#### NOTE:

THESE SPECIFICATIONS ARE SUBJECT TO CHANGE BY  
APPROPRIATE AUTHORITIES/ARCHITECT/ENGINEERS.

DEVELOPER



GOODWILL GROWTH SDN BHD <sup>1096801-V</sup>  
NO.42 TKT 1 JALAN HJ. ABDUL AZIZ, KUANTAN.  
T +609 573 8880 / +6012 310 9339

All measurement are approximates. Illustrations are artist's impressions only. Specifications and information contained herein are also subject to amendments as may be required by the Authorities and / or the Developer's consultants.

# Living at Enso

For a fine residential opportunity,  
please contact

**+6012 310 9339**

**+609 573 888**



