

A rejuvenating enclave

A soothing view

A timeless treasure trove



A dedicated, leafy tree-lined boulevard that welcomes you to ForestHill

An exquisite ensemble of nature-inspired homes, ForestHill combines residential splendour with ecological diversity in an urban location. Ensnared in a private enclave, you enjoy the tranquility in the midst of nature's verdant serenity - where the luxury villas are imbued with a feeling of calm, yet conveniently close to all the exciting attractions of the city.

overview

Discover Damansara's elite lakefront community...
A treasure trove of nature's finest



Exquisite living
by the lake, by the forest



resident amenities

A pristine retreat...
your private oasis



Exclusively for residents, the private clubhouse is the ideal place to connect with friends and neighbours, yet quiet enough for private indulgences. Enjoy sweeping views of the pristine forest and crystalline lake. Indulge yourself in the infinity pool as you gaze at the breathtaking lake, shimmering with reflection of the adjacent forest reserve. There is a special air of relaxation amid a resort-like ambiance.

From a trendy poolside party to an intimate rendezvous, the private clubhouse is a stylish place radiating with the sophistication of a luxury private resort for you to renew, entertain and impress.



Infinity Pool | Gymnasium | Sun Deck | Linear Park | Playground

Actual photo of the lake by the forest at ForestHill



The luxury weekend retreat that you can enjoy... everyday.



architecture & landscape

A seamless fusion of ingenious
architectural design and nature's work of art



ForestHill 3-storey Villas are designed to stand distinctively by the lake, by the forest; exuding a predominance of environment-significant facades with its minimalist contemporary architecture that blends naturally with the surrounding environment.

It is conceived as a restful haven and calm retreat for you to escape from the energy and bustle of the city. Intended for modern cosmopolitan living, each villa offers open-plan design, with spaces that flow and layouts that allow you to experience natural light, views and functionality.

Capitalising on ForestHill's beautiful surrounding, our premium homes deliver exceptional design and supreme quality finishes. From wide open spaces of double-volume living rooms to airy bathrooms and private landscaped terraces, ForestHill's natural environment is yours to enjoy in the private seclusion of an urban sanctuary.





Take the in-built private lift to the upper floors and you step out to another dimension of sensuous space and balconies that offer tantalising vistas of the forest or the lake.

The ingenuity of minimalist contemporary elegance, openness of the views and the calm balance of the elements seem to speak the same language as the sumptuous interiors. The sweeping expansive interiors conjure up a variety of outdoor spaces, creating an 'openness' without the feel of exposure whether you are lounging in the balcony or admiring the outdoors from the inside.





Equipped with a fortified security system and round-the-clock surveillance throughout, you will enjoy absolute bliss and peace of mind in the comfort of your luxury residence as well as within the guarded enclave.

- *Guard house*
- *CCTV*
- *Alarm system*
- *Intercom linked to guardhouse*
- *Emergency button*



plans & specifications

**Meticulous craftsmanship
with an eye for detail**



3 Storey Villa
Type ZL-A

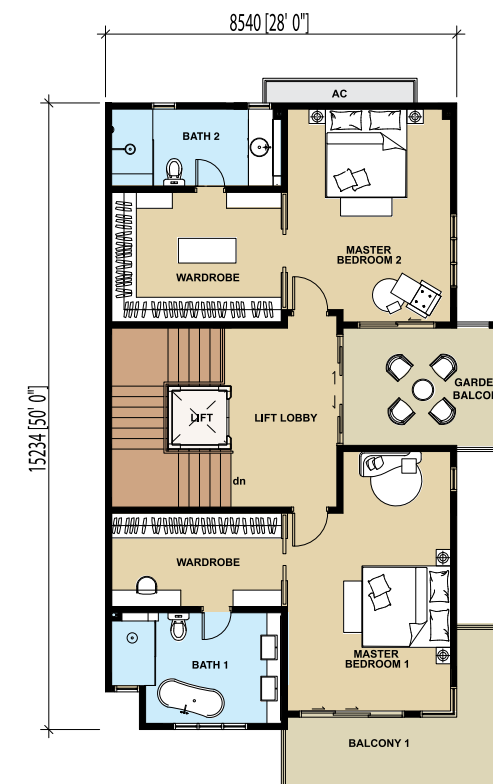
Type ZL-A FLOOR PLANS

Built Up Area
From 5,485 sq. ft.

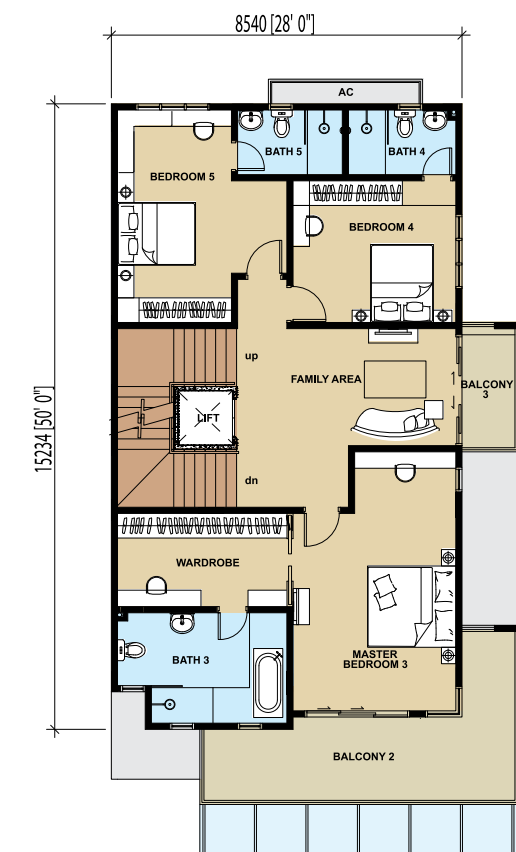
* Note: The land area configuration, dimensions and area vary from actual unit to unit. A copy of the plan showing the actual configuration and measurements of the particular unit can be made available on request.



Ground Floor



Second Floor



First Floor



3 Storey Villa
Type ZL-B

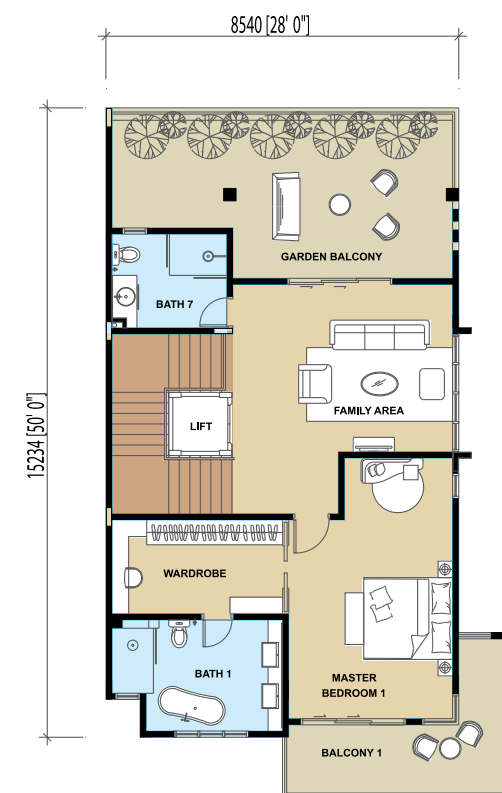
Type ZL-B FLOOR PLANS

Built Up Area
From 5,300 sq. ft.

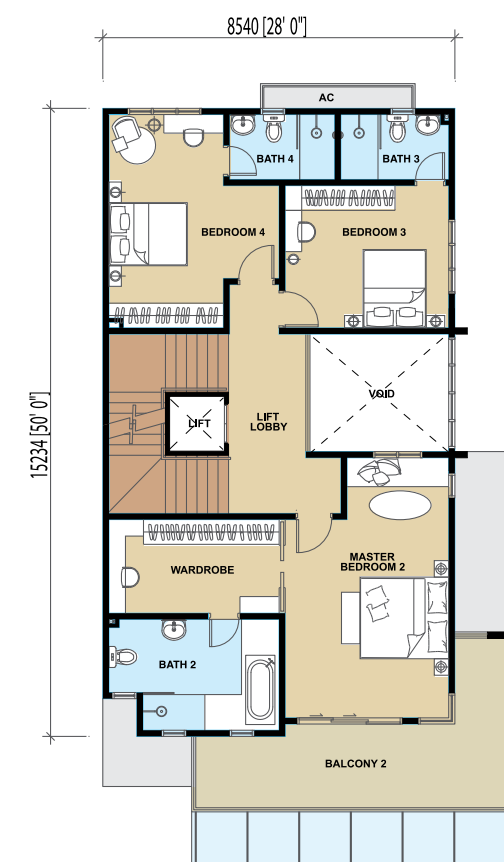
* Note: The land area configuration, dimensions and area vary from actual unit to unit. A copy of the plan showing the actual configuration and measurements of the particular unit can be made available on request.



Ground Floor



Second Floor



First Floor



3 Storey Villa
Type ZL-C

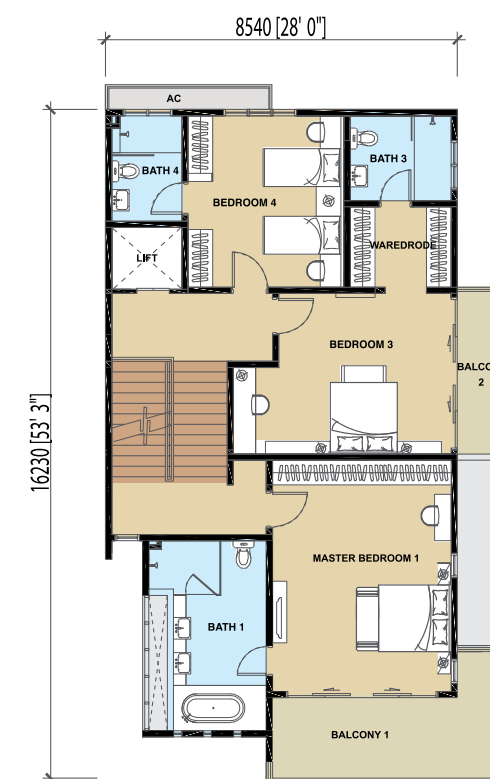
Type ZL-C FLOOR PLANS

Built Up Area
From 4,740 sq. ft.

* Note: The land area configuration, dimensions and area vary from actual unit to unit. A copy of the plan showing the actual configuration and measurements of the particular unit can be made available on request.



Ground Floor



Second Floor



First Floor

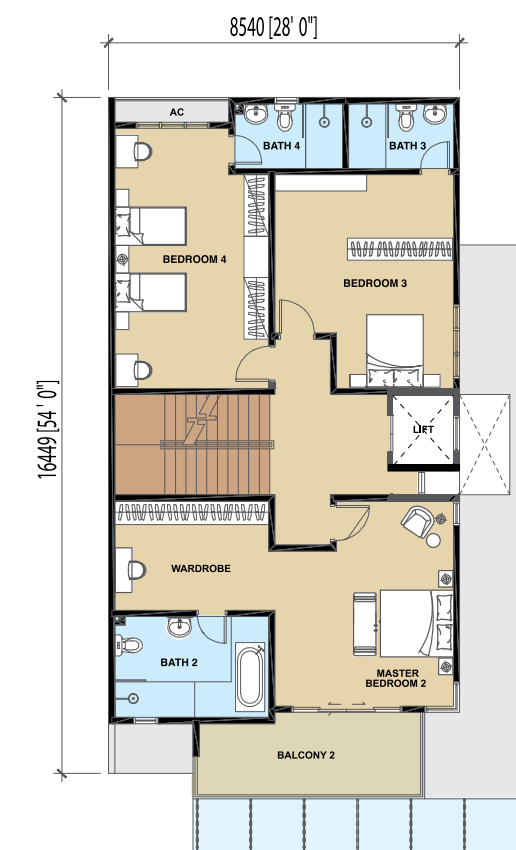
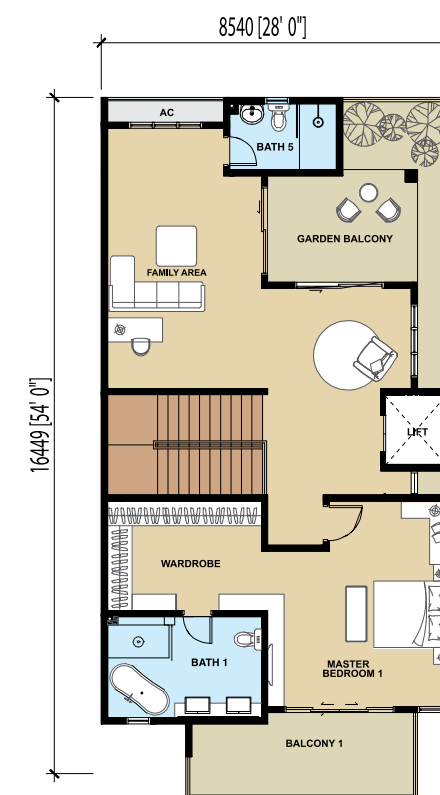


3 Storey Villa
Type ZL-D

Type ZL-D FLOOR PLANS

Built Up Area
From 5,325 sq. ft.

* Note: The land area configuration, dimensions and area vary from actual unit to unit. A copy of the plan showing the actual configuration and measurements of the particular unit can be made available on request.





3 Storey Lake Villa
Bungalow A1 / A2

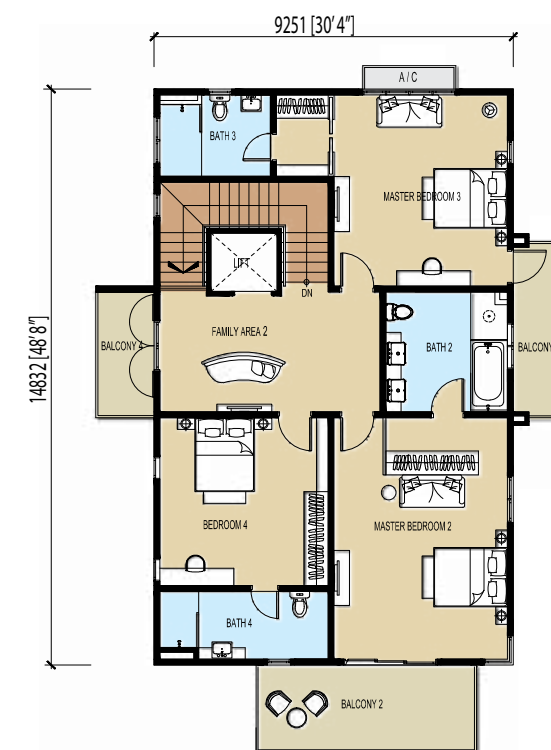
Bungalow A1/A2 FLOOR PLANS

Built-up Area

A1 - 7,065 sq. ft.

A2 - 5,952 sq. ft.

* Note: The land area configuration, dimensions and area vary from actual unit to unit. A copy of the plan showing the actual configuration and measurements of the particular unit can be made available on request.





3 Storey Lake Villa
Bungalow B

Bungalow B

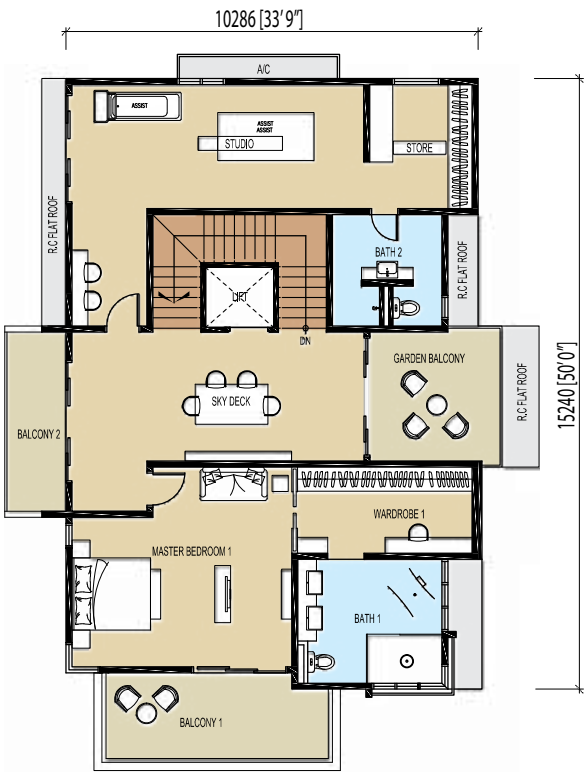
FLOOR PLANS

Built-up Area
From 7,340 sq. ft.

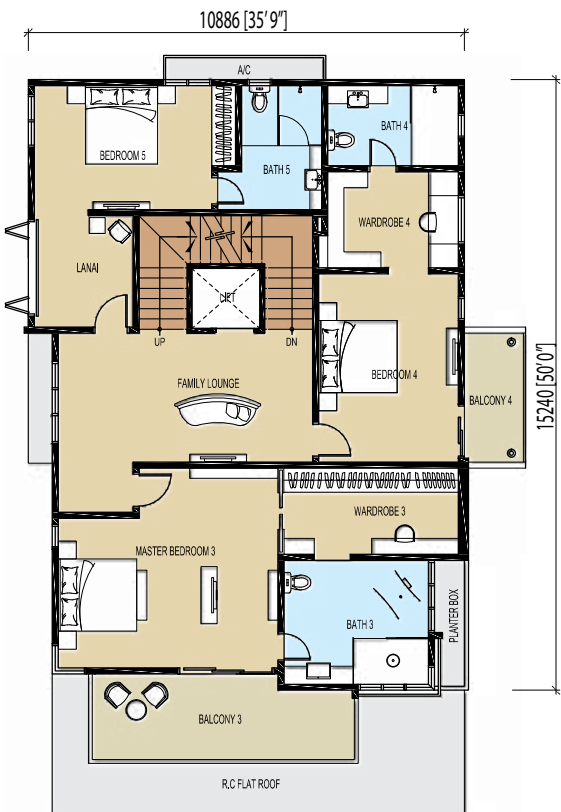
* Note: The land area configuration, dimensions and area vary from actual unit to unit. A copy of the plan showing the actual configuration and measurements of the particular unit can be made available on request.



Ground Floor



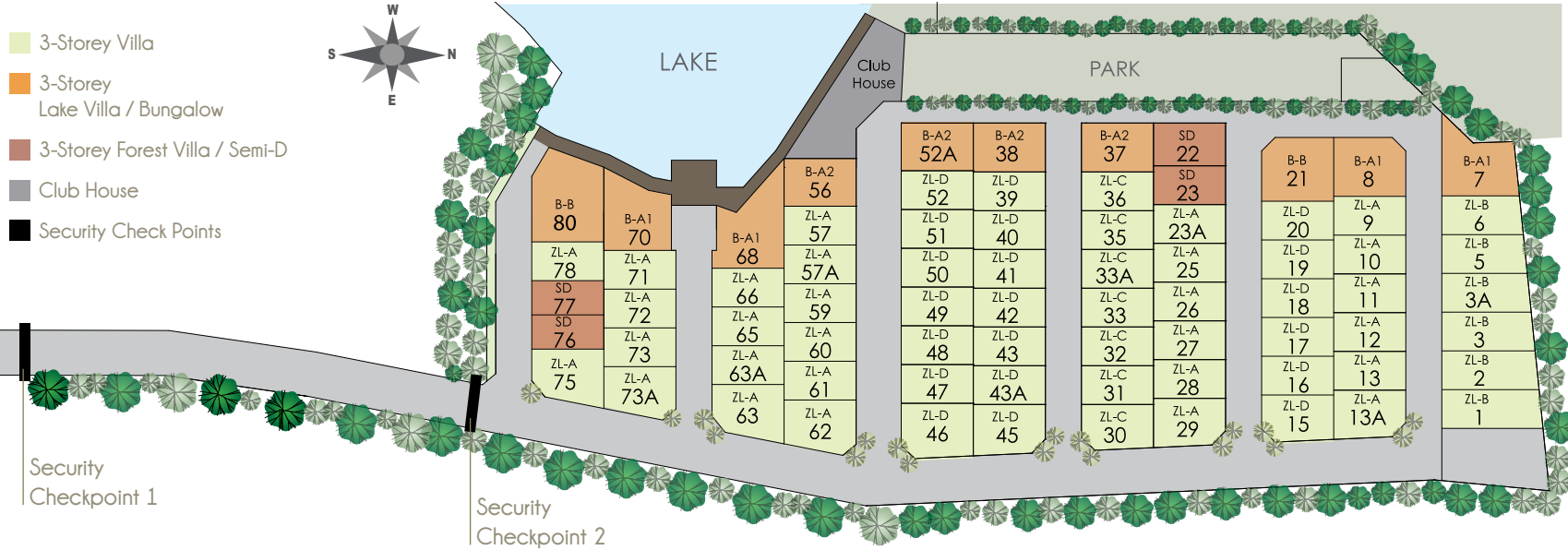
Second Floor



First Floor



SITE PLAN



SPECIFICATIONS

STRUCTURE	Reinforce Concrete Framework	FLOOR FINISHES						
WALL	Plastered and Painted Finish	Living	Quality Marble					
ROOF	Quality Roofing / R.C. Flat Roof (Where Applicable)	Dining	Quality Marble					
CEILING	Plaster Ceiling / Skim Coat and Paint (Where Applicable)	Powder room	Quality Marble					
WINDOWS	Powder Coated Aluminium Frame Window	Master Bathroom 1	Quality Stone Flooring					
DOORS		Other Bathrooms	Quality Selected Tiles					
Main Entrance	Quality Timber Door	Bathrooms	Quality Selected Tiles					
Bedrooms	Quality Timber Door	Wet Kitchen	Quality Selected Tiles					
Others	Timber Door, Timber Louvered Door, Powder Coated Aluminium Folding / Sliding Glass Doors (Where Applicable)	Store Room	Selected Tiles					
IRONMONGERY	Quality Locksets and Hinges	Terrace	Quality Selected Tiles					
WALL FINISHES		Yard	Quality Selected Tiles					
Master Bathroom 1	Quality Selected Marble to Ceiling Height	Maid Room	Selected Tiles					
Other Bathrooms	Quality Selected Tiles to Ceiling Height	Apron	Quality Selected Tiles					
Wet Kitchen	Quality Selected Tiles to Ceiling Height	Pond	Quality Mosaic / Selected Tiles / Pebbles Finish					
Maid's Bath	Quality Selected Tiles to Ceiling Height	Master Bedrooms	Quality Timber Flooring					
Powder Room	Quality Selected Tiles to Ceiling Height	Bedrooms	Quality Timber Flooring					
Pond	Quality Mosaic / Selected Tiles / Pebbles Finish	Family room	Quality Timber Flooring					
Other Rooms	Plaster and Paint Finish	Staircase	Quality Timber Flooring					
GATE	M.S Grate with Brick Pier	Lift Lobby	Quality Timber Flooring					
SANITARY FITTINGS	Designer Sanitary Wares and Fittings to All Bathrooms (Except Maid's Bath)	ADDITIONAL FEATURES	Private Home Lift to All Units Central Water Booster Pump Hot & Cold Water to All Showers, Complete with Mixer Taps (Except Maid's Bath) Air-conditioning Piping Motorized Main Gate with Remote Control Intercom System Connected to Guard House Alarm System with Emergency Buttons					
MASTER BATHROOM 1	Long Bath, Double Bowl Basin with Marble Counter Top	ELECTRICAL INSTALLATION						
		Type ZL-A	Type ZL-B	Type ZL-C	Type ZL-D	Type B-A1	Type B-A2	Type B-A3
		Power Point	50	45	41	46	52	52
		Lighting Point	76	73	58	66	84	82
		A/C Point	7	6	6	6	9	9
		SMATV Point	3	3	3	3	4	4
		Network Point	3	3	3	3	4	4
		Telephone Point	3	3	3	3	3	3
		Fan Point	11	11	10	11	12	12
		Water Heater	6	6	5	6	6	6

Subject to changes by the relevant Authorities/Engineer/Architect.



location

Urban charm & city amenities
within your easy reach

Located within close proximity to established neighbourhoods, ForestHill invites you to a unique urban location where everything that matters to you is readily available within Mutiara Damansara as well as Petaling Jaya north. A host of amenities - from shopping at lifestyle outlets to gastronomic delights, banking, sports, arts and entertainment - everything you desire is close at hand.

In fact, getting just about anywhere is a breeze as you can easily access to a network of expressways, such as LDP, NKVE and the Penchala Link.



LOCATION MAP



LEGEND

EDUCATION INSTITUTES

Sekolah Kebangsaan Sg. Penchala	2.9km
Sekolah Menengah Kebangsaan Tun Dr Ismail	5.2km
Bandar Utama International College	5.4km
Sekolah Kebangsaan Bandar Utama	5.8km
British International School Kuala Lumpur	5.8km
SEGI University College	7.1km
Twintech International University College of Technology	7.6km
Sri KDU International School	7.8km
Garden International School Kuala Lumpur	8.9km
KDU University College Malaysia	9.0km
Mont Kiara International School	9.4km
The International School @ Parkcity	9.9km
ELC International School	11.1km

GOLF CLUBS

Bandar Utama Golf Driving Range	4.5km
Seri Selangor Golf Club @ Kota Damansara	5.6km
Sri Damansara Club	6.4km
Kuala Lumpur Golf & Country Club	8.3km
Bukit Kiara Golf Club	8.3km
Tropicana Golf Club	8.4km
Valencia Golf & Country Club	11.9km

SHOPPING MALLS

The Curve Shopping Mall	2.6km
e@Curve	2.6km
IPC Shopping Centre	2.6km
1 Utama Shopping Centre	4.3km
Sunway Giza Mall	5.6km
Tropicana City Mall	8.0km
Hartamas Shopping Centre	8.7km
Publika	10.3km
Bangsar Shopping Mall	12km
Mid Valley Megamall	14.7km

HOSPITALS & MEDICAL CENTRES

Apollo TTDI Medical Centre	4.6km
Damansara Specialist Hospital	6.1km
Tropicana Medical Centre	6.9km
Sime Darby Medical Centre Desa Park City	8.9km
Global Doctor Hospital	9.0km
Nourish Tech Chinese Medical Centre	9.3km
Sime Darby Specialist Centre Megah	9.8km
University Malaya Specialist Centre	11.5km